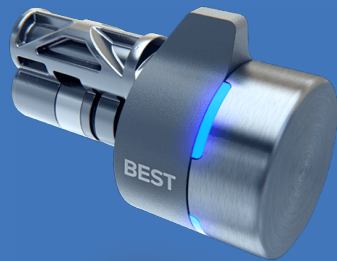




Elements™

Cloud-based Access Control and Video Management System

bit.ly/LS2Elements | bit.ly/ElementsHelp



SWITCH™ Tech Integration

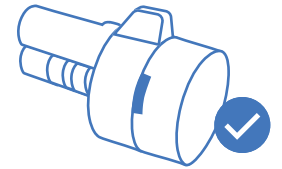
SWITCH™ Tech and SWITCH™ Core are registered trademarks of dormakaba USA Inc. All rights reserved

timeforaswitch.com | dormakaba.com/us-en

© 2022 Carrier

1 Get the Hardware Ready

Have your SWITCH™ Core near your phone and ready to install and configure.



2 Add the Lock in the Elements portal

Give the lock a name on the Devices page in the Elements customer portal to make it available for the app to install. Add the lock to Elements spaces to assign access to your users.



3 Get the Switch Tech App

On the People page in the Elements portal, issue a credential with administrator privileges. Check your email and download the app. Log in with your token and PIN and you're ready to install.

Note: Your access token and PIN are emailed separately for security. Use these to sign in to the app with administrator privileges.

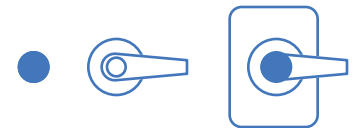


4 Install the Lock with Switch Tech App

Configure the lock in the app with the name you set up in the Elements portal from step two. Use the installation guides to provision and physically install the lock.

Installation: bit.ly/STInstallation

Admin App: bit.ly/STAppAdmin



5 Assign Access in Elements portal

Issue Switch Tech credentials to your users from the People page in the Elements portal. Use People Groups to assign spaces to users so they can access your locks.



6 Monitor the Locks in Elements portal

See lock activity in the Elements portal, from access events to battery life updates. Test with the app to make sure access control is in place.

Tip: Use the Email Notification rules in the Elements portal to receive low battery warnings.

