

## DFI Gateway

The gateway facilitates communication between the cloud-based security system and on-site devices.

### Contents

The following items are included in the box when receiving a gateway.

- One (1) gateway unit
- One (1) sticker label containing the System ID
- One (1) power cord
- One (1) power adapter
- Four (4) rubber feet
- Four (4) foam bumpers

Only the power and Ethernet ports will be used. Other ports (HDMI and USB) are disabled.



Use caution when handling the gateway. The surface may be hot. Allow the gateway to cool before handling it.

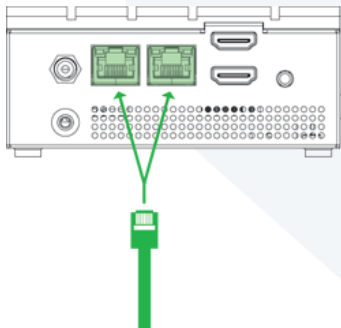
## Gateway Installation

Before installing the gateway, make note of its System ID. The System ID is printed on a label affixed to the gateway.

- i** The gateway depends on the network being configured for DHCP. If a static IP address is needed for the gateway, it must be configured through MAC address mapping on the DHCP server.

### Connect the Gateway

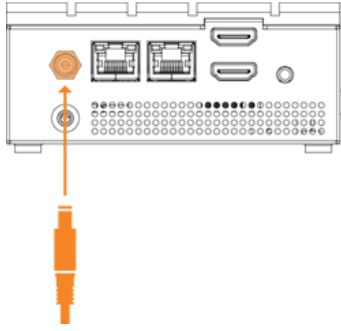
1. Connect the gateway to an internet-accessible network. Use either of the two Ethernet ports located on the back of the gateway.



- Proxies are not explicitly supported. If a proxy is implemented, it must be transparent to the gateway and downstream clients (i.e., does not require any changes to client trusted certificates or configuration changes to use the proxy).

- i** This port is only used for internet access. Do not connect access controllers to the Ethernet port.


2. Connect the gateway to power.



3. Power on the gateway.

After being connected and powered on, the gateway communicates over the internet. All connections that the gateway establishes are outbound. The firewall does not need any ports opened for inbound connections.

## Configure the Gateway

1. In Elements, on the Devices page, add the gateway by selecting .
2. Enter a **Name** for the gateway.
3. Enter the **System ID**.
4. Select **Save**.

## Status

Earlier models of the gateway have a single LED to indicate status of the gateway.

Single LED Behavior	Status
Fast blinking white	Initialization
Fast blinking red	No network connection or IP address
Double blinking red	System registration service unreachable or no internet connection (IP address assigned)
Blinking yellow	System registration service reachable, not connected to IoT
Alternate blinking red, yellow	Lost connection to IoT Hub
Steady green	Gateway operational
LED off	Gateway powered off

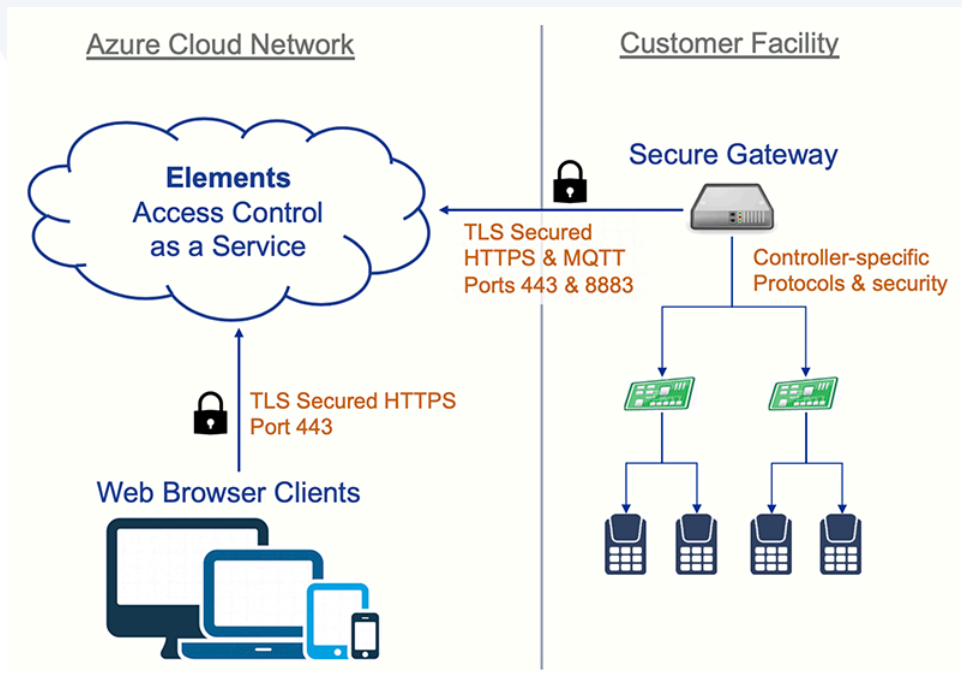
Multiple LED Behavior	Status
Blinking red, orange, and green	Initialization
Blinking red	No network connection or IP address
Steady red	System registration service unreachable
Blinking orange	System registration service reachable, not connected to IoT
Steady orange	Lost connection to IoT Hub
Blinking red and orange	Gateway operational, pending association with customer
Steady green	Gateway operational and associated with customer
LED off	Gateway powered off

Later models of the gateway have three LEDs to indicate status of the gateway. These LEDs appear on the front of the gateway and are ordered, from left to right, red, orange, green.

## Architecture

Application and service connectivity information is provided so that the network may be secured.

*High level architecture diagram*



## Security

Limit access to the network by enabling a firewall to secure ports and endpoints.

### Communication for the Gateway

Outgoing: HTTPS (TCP 443) and MQTTS (TCP 8883)

Endpoints:

- deviceregistration.elementssecure.com:443
- deviceregistration.elementslive.net:443
- elements-prd-ioth.azure-devices.net:8883
- elementsprdsa.blob.core.windows.net:443
- gatewayfirmware.elementssecure.com:443
- gatewayimages.elementssecure.com:443



Proxies are not explicitly supported. If a proxy is implemented, it must be transparent to the gateway.

### Communication for Video

Communication with Milestone services from the Elements gateway is done on following ports:

- Milestone OnvifServer Default Port: TCP 580
- Milestone OnvifServer Default Port: TCP 554
- Milestone Recording Server Default Port: TCP 7563
- Milestone XProtect Configuration Server: TCP 80, 443

Configure the network infrastructure to allow connections to and from the above addresses on the following ports:

- stun:global.stun.twilio.com
- turn:global.turn.twilio.com
- Port 3478 - Protocol: STUN, TURN UDP
- Port 443 - Protocol: TURN TLS
- Ports range 10000 - 60000 - Protocol: UDP/SRTP/SRTC